



The United States of America:  
Peter Kwasny Inc.  
62-64 Enter Lane,  
Islandia, NY 11749

Distributed in

Canada by  
Peter Kwasny Spraypaint Canada Inc.  
2275 Lakeshore Blvd. West, Suite 530  
Toronto, ON. M8V 3Y3

Toll free North America  
Phone: 1-844-426-6330 / Fax: 1-866-226-6434  
order@kwasny.us / service@kwasny.us  
www.spraymax.com

**SprayMax®**  
**1K Spot Blender**  
**305 g NET WT. 10.8 oz**  
**Art. Nr. 3680093**



## Product

### Description / Purpose

1K Spot Blender is a special product for homogenous paint transitions in the blending area of 2K clearcoats as well as of single stage topcoats with outstanding blending results. The Spot Blender is used immediately after the clear- / topcoat is applied.

### Properties

- Seamless edge transitions in the blending area
- Superior solving ability
- No colour deviations
- Dries to a matt finish, must be polished
- Specially for polishing
- Can be polished without edges
- Dries to a glossy finish, does not need to be polished and therefore very good finish results

### Material base

Combination of resins and solvents

### Colour

Transparent

### Solid content

4.8 % per weight related to active ingredient

**EPA Coating Category**

CCP Clear Coatings Product  
PWR Limit 1.50

**CARB Aerosol Rule Coating Category  
(01/2017)**

UFC Uniform Finishing Coating  
PWR Limit 1.30

**Substrate**

2K clear coats and 2K topcoats  
The old paintwork within the blend-in area should thoroughly be topped off using a P 2000 – P 4000 grit sand paper

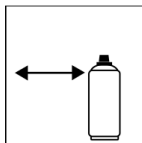
**Processing**

**Protection measures**



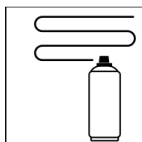
Wear personal protection equipment.  
(respiratory mask/gloves/goggles)  
For more information, see safety data sheet.

**Spraying distance**



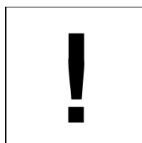
6 - 8 inches / 15 – 20 cm

**Spray passes**



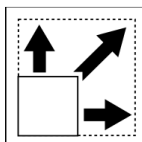
Apply several light spray passes to the edge of the blend-in-area immediately after application of the 2K clear coat or 2K topcoat to achieve a smooth transition.

**Processing conditions**



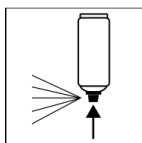
Optimum application at 64°F - 77°F (18°C - 25°C) and a relative humidity from 40 - 50 %.

**Coverage**



approx. 5.4 sq ft (0.5 m<sup>2</sup>) / aerosol

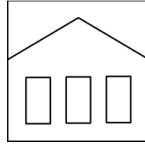
**Finish**



After painting, turn the can upside down and spray the valve until empty.

## Additional Information

### Shelf Life



60 months

The usage period refers to an unused can that is stored correctly at a temperature of 60° F - 77° F / 15 – 25 °C and a relative humidity below 60%. The can must be stored and transported in an upright position in a dry place where it is protected against chemical and mechanical influences. The safety information on the can and all statutory provisions applicable for the storage site must be observed.

### Disposal



The completely emptied spray cans must be disposed of in the recycling system. Cans with hardened material must be disposed of as special waste.

### Note

For professional use only.

Identification, see safety data sheet.

The contents in this technical data sheet were created with great care and reflect our current state of knowledge. They provide the user with application-specific information and do not promise certain properties. The information is non-binding and we accept no liability for its integrity, accuracy and completeness. They do not relieve the user of their duty to check the suitability of our product for the intended purpose. The warnings printed on our labels must be respected. Our brands and patents are protected by copyright. All rights reserved. We reserve the right to update, amend or supplement the content of the information without prior notice.